



Second Location:
December 2009

Second Location:
May 1, 2010

**(Special top was added
in January as a
ventilation experiment)**

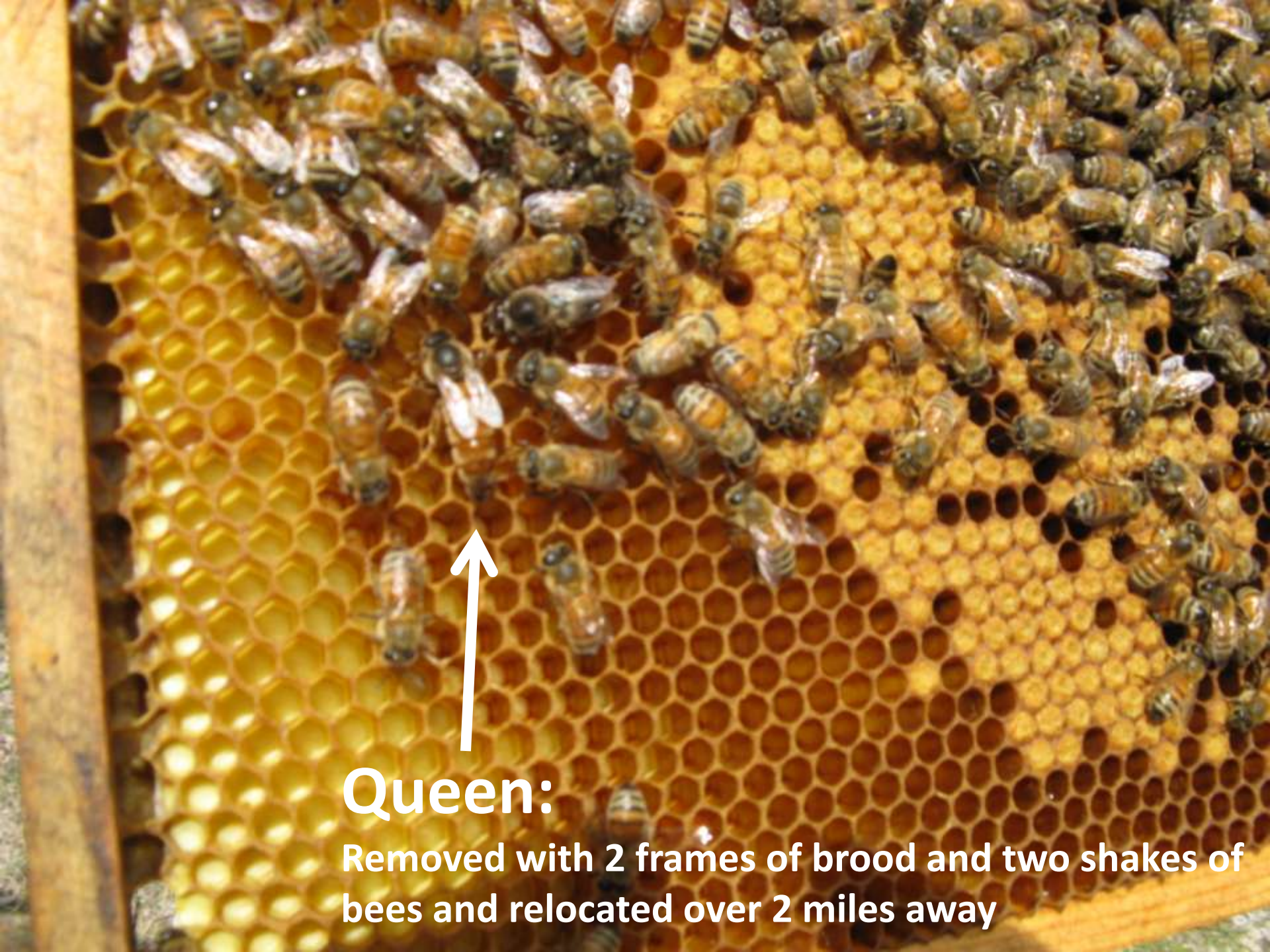






Looking for
Overwintered
Queen





Queen:

Removed with 2 frames of brood and two shakes of bees and relocated over 2 miles away



Queen



Notching



Bringing in Pollen





**May 1,
2010**

**(second hive at
second location)**

Smoke!







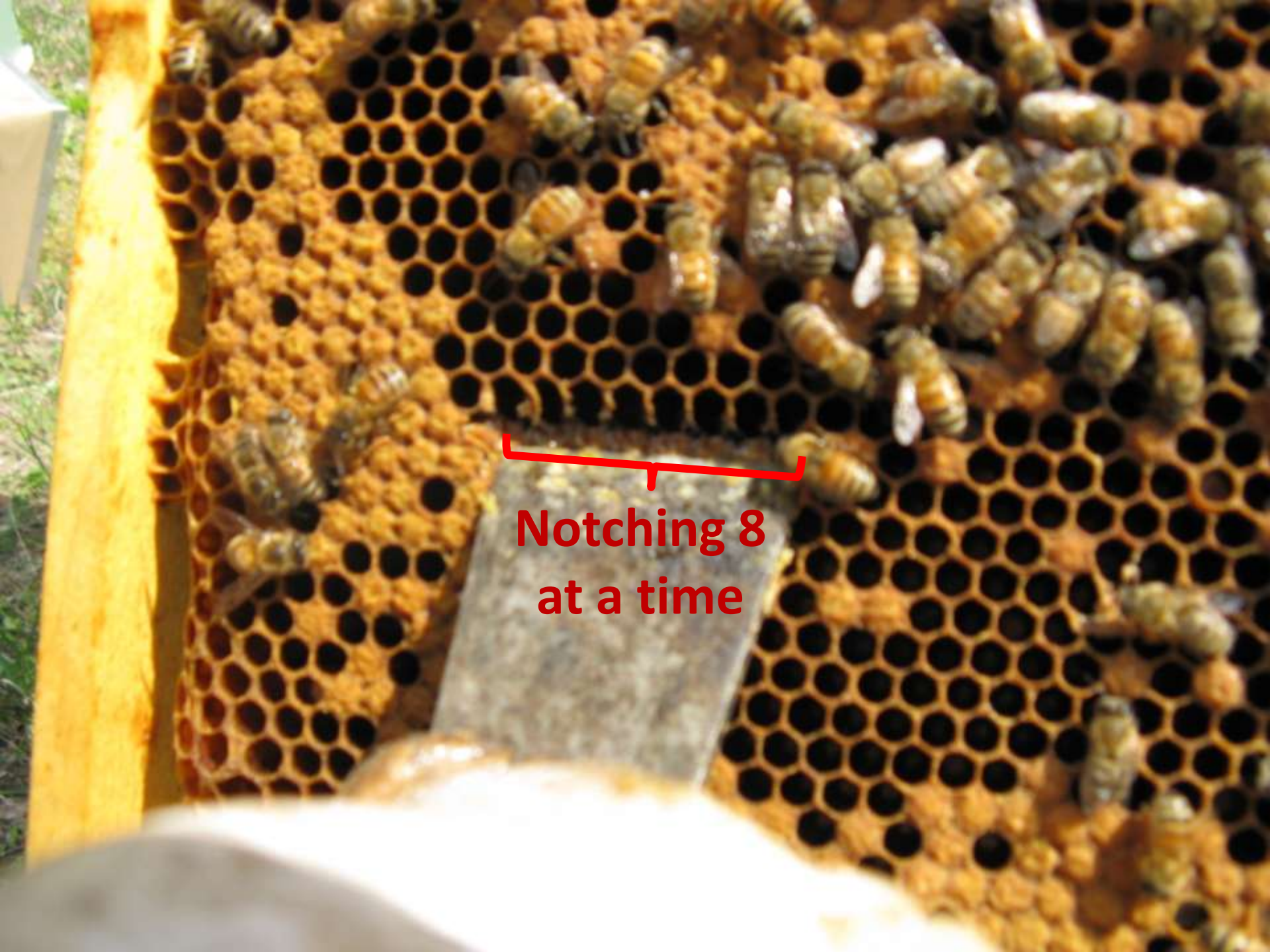




Queen
(Moved 2 miles like
the others)



Notching



Notching 8
at a time





OTS Queen Cells
(one week later)